



Computing at School

Assessment Working Group

Monday 22nd June 1.00 pm to 1.45 pm

John Woollard University of Southampton John.Woollard@computingschool.org.uk

**Transition
to key stage 3**

Andrew Csizmadia Newman University, Birmingham
Tig Williams Tig.Williams@computingschool.org.uk

Quantum

Richard Millwood, Visiting Research Fellow, Trinity College Dublin
@richardmillwood

**Formative
assessment**

Jane Waite, Queen Mary University of London **@janewaite**
Julie Price, University of Roehampton **@Ma4273Blossom**

Moderator

Jon Chippindall

#CASVirtual20 @compatsch



CAS Assessment wg @ CAS Virtual Showcase

The purpose of the CAS Assessment working group is to provide clear statements of informed opinion relating to current issues of all aspects of formative and summative assessment in the teaching of computing reflecting academic and professional understanding of the issues.

How

Who

Where

When

What

We're providing the opportunities to discuss

3 important assessment themes:

- Transition,
- Quantum
- Emergency remote teaching (formative assessment focus)

There will be a plenary where we present the outcomes from the activities on ***Thursday July 2nd 2.00pm - 2.45pm GoToWebinar***

Transition Primary to Secondary Computing

•Painting the landscape:

- What should computing transition look like from KS2 to KS3?
- What will computing transition look like from KS2 to KS3 due to Covid-19?

•Building the Bridge:

- Tools
- Techniques
- Talk
- Tactics
- Teamwork



Transition Primary to Secondary Computing

Scope of the Working Group:

We will explore:

- Summative assessment of computing for transition.
- How to capture learners' experience of computing.
- Identify barriers/challenges.
- How we can share our experiences of/ideas for transition at this time.





Quantum

Dr Richard Millwood, Visiting Research Fellow, Trinity College Dublin

Goal of this showcase - to explore and discuss the pedagogical approach and the body of content relating to CAS's Project Quantum

Background

- Project Quantum has created a large bank of multiple choice questions and quizzes online to cover the computing curriculum.
- Quizzes are automatically marked, and students can review their work.
- Teachers can schedule quizzes and analyse their students' individual and collective responses to inform future teaching.
- Teachers can write questions and quizzes themselves.
- The question bank and ALL pupils' responses may be researched to identify common misconceptions and improve quality of questions as well as clarify the curriculum itself.

community.computingschool.org.uk/resources/4382



Quantum

There are currently over 11,500 Computing questions

← Computing	
CS - Foundations	7678
IT - Applications	1398
DL - Implications	1151

diagnosticquestions.com

Quantum

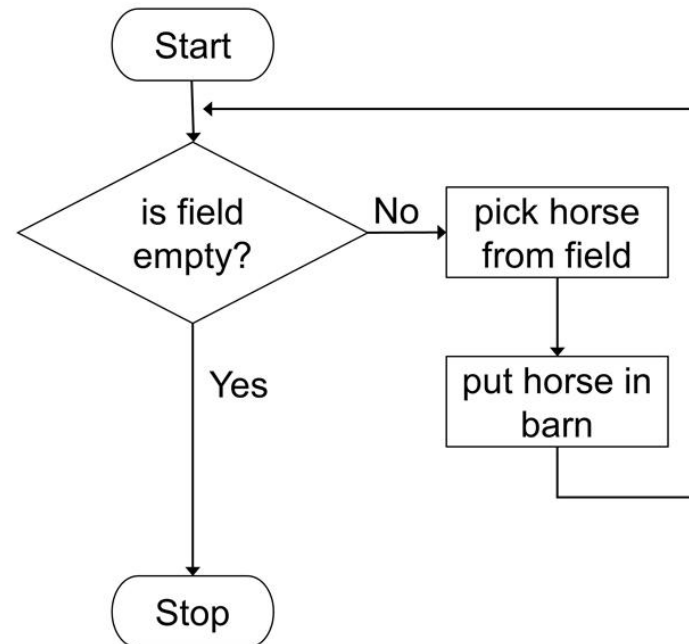
COMPUTING AT SCHOOL

EDUCATE · ENGAGE · ENCOURAGE

Carol is putting horses in a barn. Horses are in the field.

Identify the repetition statement that matches this flowchart.

- A repeat for a fixed number of times
- B while false do
- C while true do
- D repeat until true



Quantum



GROUP	A	B	C	D	TOTAL	OPTIONS
All Users	18 %	23 %	12 %	47 %	4170	Delete
All Users (11~11)	0 %	33 %	0 %	67 %	9	Delete
All Users (12~12)	19 %	23 %	10 %	47 %	2440	Delete
All Users (13~13)	18 %	22 %	10 %	49 %	767	Delete
All Users (14~14)	11 %	22 %	26 %	42 %	93	Delete
All Users (15~15)	13 %	28 %	15 %	45 %	47	Delete
All Users (16~16)	12 %	26 %	21 %	41 %	34	Delete

Quantum



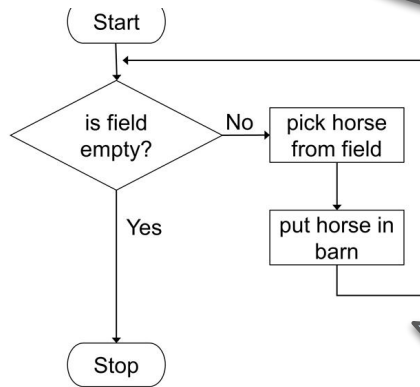
“I think this because this statement is incorrect. Carol is saying that she is putting the horses in the barn, but another one of the statements is that she is putting the horses in the field. The horses can't be at two different places all at once, so this statement is incorrect”

“I think this because the statement repeats each time it is false, only stopping when it becomes true. Each time the statement "is field empty?" is false, it loops back around again until it becomes true.”

“While the answer to the question is false you carry out the requested actions. D could also be correct as you repeat the actions until the answer to the question is true”

Carol is putting horses in a barn. Horses are in the field.

Identify the repetition statement that matches this flowchart.



- A repeat for a fixed number of times
- B while false do
- C while true do
- D repeat until true



Quantum

Timetable of sessions within the CAS Virtual Showcase:

1. 16:00 Tuesday 23 June
Engaging with Quantum content - doing a quiz, a chance for teachers new to the project to understand what it is about
2. 16:00 Thursday 25 June
Investigating the Quantum data - to look at some of the data about learners' responses to identify attainment and misconceptions.
3. 16:00 Tuesday 30 June
Exploring Quantum futures - an open discussion about whether and how the project could develop

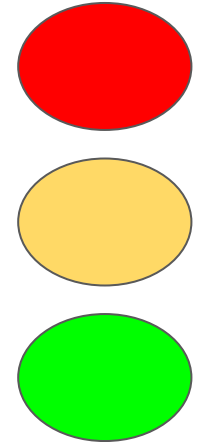
Join these one hour online sessions by starting here:

bit.ly/CASquantum



What are the assessment issues of emergency remote teaching?

1. To what extent are we using formative assessment during lock down?
2. What are the challenges/ barriers?
3. What has been our response and how are we overcoming these?
4. How can we share these experiences/ideas to support others?



What is ERT?

Emergency Remote Teaching (ERT) is the teaching which is provided during emergencies where pupils are required to be remote from their schools and teachers.



ERT is not online/distance teaching and learning, which might take months of design and careful implementation.



What is the scope of our activities?

- Transition is being considered by Andrew's group.
- Examinations will be outside the s
- WE are looking at FORMATIVE



Taking part - Activity 1

Assessment requires learning to be **visible** and formative assessment requires a method to **feedback** to pupils.



CAS Research is running a session on ABC a method for reviewing and developing online learning activities. Please come along to this session to help us develop a shared understanding of terms for teaching online.

Tuesday 23rd 1.00pm - 1.45pm **ABC A process for reviewing and developing online learning in ERT in schools ([CAS Virtual Showcase session](#))**

Taking part - Activity 2

A set of collaborative forums in which we will discuss and collaboratively crowdsource, the challenges, responses and recommendations for assessment during ERT.

These forums are

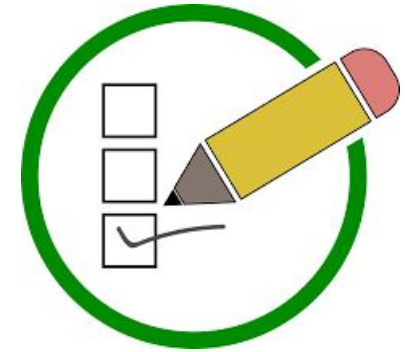
[https://bit.ly/
FormAssERT](https://bit.ly/FormAssERT)



- Online Meeting - **Monday 29th 4.00pm - 5.00pm ERT** The challenges, responses and recommendations ([Zoom meeting](#))

Let's contribute straight away

1. To what extent are we using formative assessment during lock down? (Poll)
2. What are the challenges/barriers?(Poll)





Computing at School

Assessment Working Group

Questions and answers about...

Joining CAS Assessment wg

- Transition [Friday 10.00am](#)
- Quantum [Tuesday 4.00pm](#) [Thursday 4.00pm](#) [Tuesday 4.00pm](#)
- Emergency Remote Teaching [Tuesday 1.00pm](#) [Monday 4.00pm](#)

Plenary is Thursday July 2nd at 2.00pm [signup](#)